



Ideal Lighting Systems Pvt. Ltd.

COMPLETE LIGHTING SOLUTION

Plot No.209/9, GEB Office ROAD, GIDC Ankleshwar- 393002
GUJARAT, INDIA. TEL :- (02646) 220245, FAX :- 222713
www.ilsgroup.in, www.ils.cc Email. swagatank@gmail.com, info@ils.cc,

Electrical Analysis Report With Harmonic

Product: Flame proof LED Bulk Head 20W

Product Code: FLPBHSQ-20-XX-YY

Ideal Lighting Systems Pvt. Ltd

Operator Name

Umesh Chandra Maurya
Electrical Engg.

Product : Flame Proof LED Bulk Head 20W

Product Code : FLPBHSQ-20-XX-YY

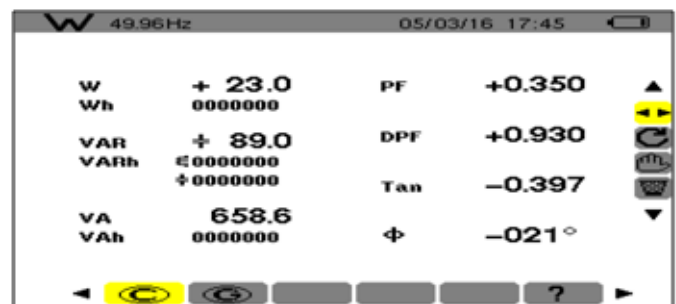
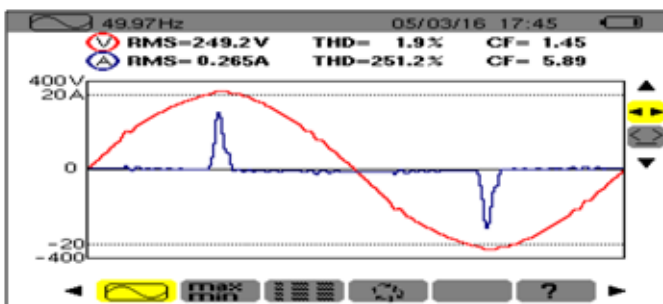
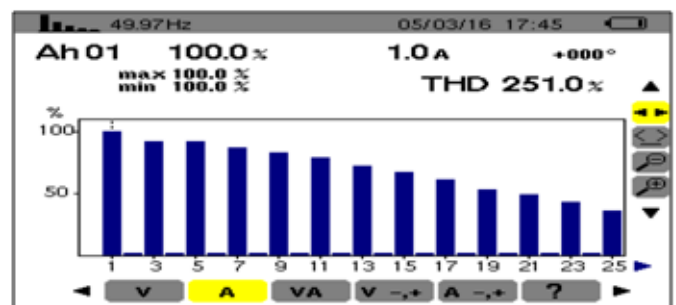
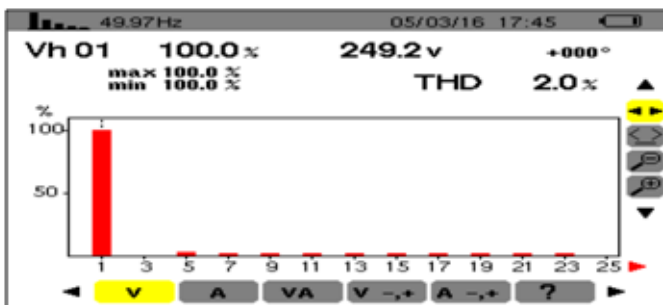
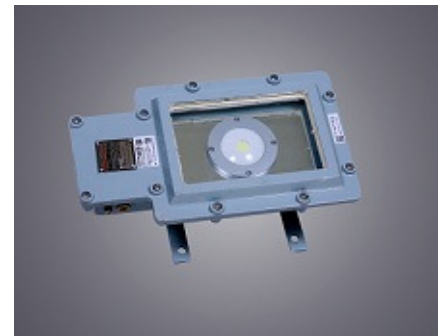
Recording Start Date 29-02-16

Recording Duration 4:59 (min:s)

Instrument ID Model C.A 8230 - 103247 1.6

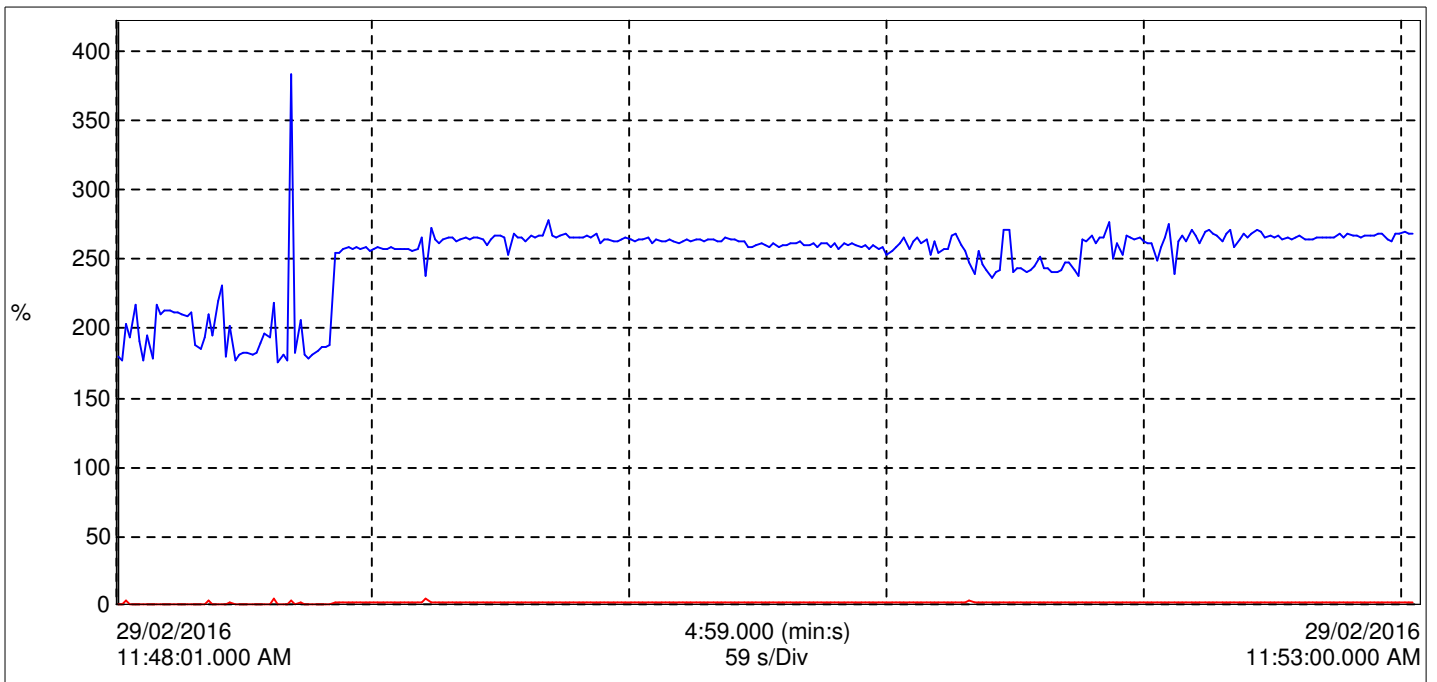
Database File Name Trend A_5.dvb

Instrument Configuration Connection Type: Single-Phase





Title : Total Harmonics Distortion Graph
Product : Flame Proof LED Bulk Head20W
Product Code : FLPBHSQ-20-XX-YY



Graph - Total Harmonic Distortion - ATHD / VTHD

29/02/2016 - 11:48:01.000 AM	
Value	
1.500	— V THD
180.3	— A THD





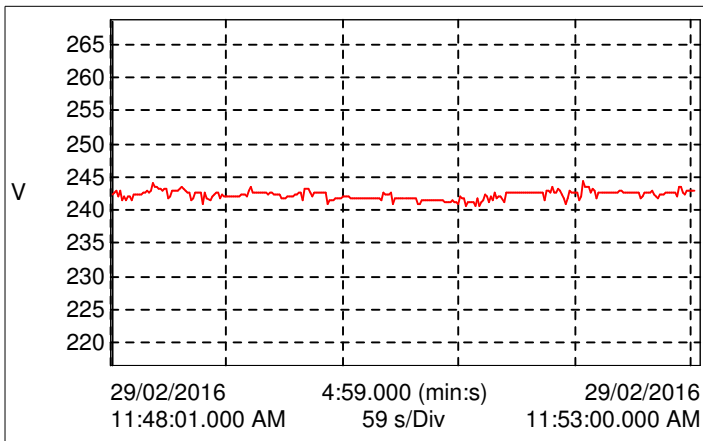
Ideal Lighting Systems Pvt. Ltd.

COMPLETE LIGHTING SOLUTION

Plot No.209/9, GEB Office ROAD, GIDC Ankleshwar- 393002
GUJARAT, INDIA. TEL :- (02646) 220245, FAX :- 222713
www.ilsgroup.in, www.ils.cc Email. swagatank@gmail.com, info@ils.cc,

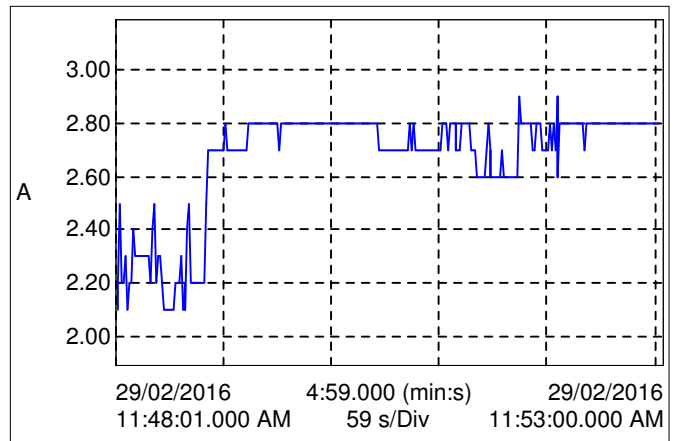
Title : Graphs-Voltage/ Current/ Power/ PF
Product : Flame Proof LED Bulk Head20W
Product Code : FLPBHSQ-20-XX-YY

Graph -Voltage(Vrms)



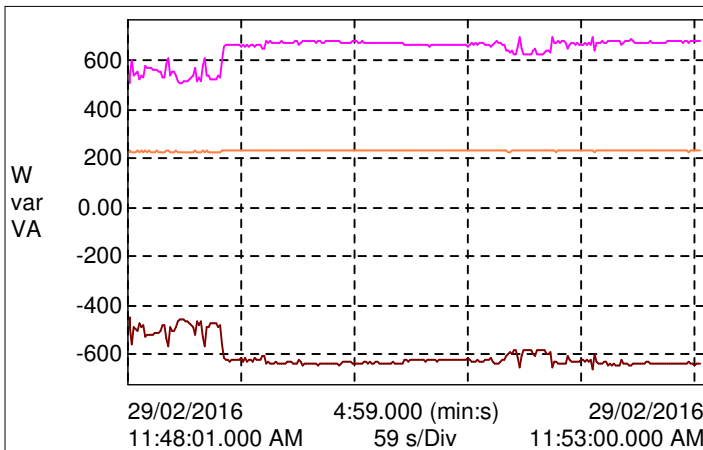
29/02/2016 - 11:48:01.000 AM
Value
242.4 — V RMS

Graph - Current(Arms)



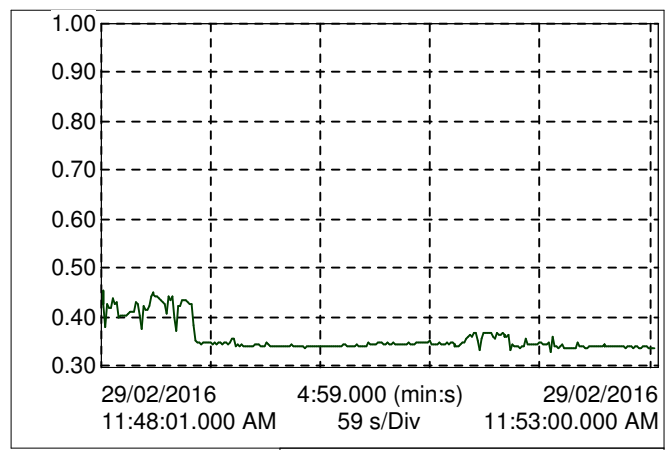
29/02/2016 - 11:48:01.000 AM
Value
2.100 — A RMS

Graph - true Power (W) / Apparent Power (VA) /
Reactive Power (var)



29/02/2016 - 11:48:01.000 AM
Value
227.7 — W1
-448.2 — var1
502.7 — VA1

Graph - Power Factor (PF)



29/02/2016 - 11:48:01.000 AM
Value
0.453 — PF1
0.935 — DPF1