



ideal Lighting Systems Pvt. Ltd.



PRODUCT SPECIFICATIONS

PRODUCT NAME	LED Flame Proof Hand Lamp	Doc No. - ILS/FP/SPC-40/00
PRODUCT CODE	FLPHLRG-15-XX-YY	Date : 01.04.2016

Characteristics

Characteristics	Std. Value
Luminaries wattage	15 Watt
Input Voltage	230 V
Input Frequency	50 Hz
Input Current	0.3 A
Power Factor	NA
Athd.	CLASS A
Electrical Efficiency	84%
Light Spreading Angle	180°
Temperature Class	T6
IP Standard	IP66
Total Weight	3.2Kg
Starting Time	Rapid (0.2 Sec)
Guarantee	2 Years including FLUX/CCT/CRI

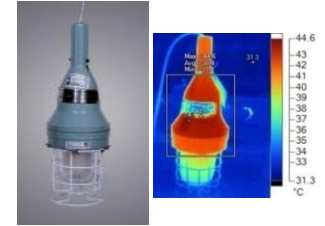
LED LAMP MAKE - CITIZEN JAPAN	Model No	LED type / No of LED Lamp	Total Lumen @Tc 25°C	Lumen Efficacy (Lm/ Watt)	CCT / Color Rendering index	SP Ratio
	CLU038 - 1205	COB/ Single Lamp	2243	172 lm/W	3000K / RA 70	2-2.25
			2352	181 lm/W	5000K / RA 70	
			2261	174 lm/W	6500K / RA 80	
	MacAdam Ellipse Stage	STEP 3				
	LED -Wattage/Current/Voltage	13W / 370mA/ 35.2V @Tc 25°C				
	Lamp Life	1,00,000 Hours Min.				
	Certifications / Reports	LM70, LM80/Photo Bio. Test / Vibration Test				
	Identification Feature	Unique Serial No. Printed on each Lamp				
	Actual Test Report of CITIZEN LED Lamp	Actual Operating test Report for 63,000Hrs				

LED DRIVER MAKE - MEANWELL	Model No	Type of Driver	Input Voltage Range	Frequency Range	Inrush current	Leakage current	Output Protection	Withstand Voltage	Surge Protection	MTBF /DMTBF	Capacitor Life Cycle
	APC-16-350	Constant Current (CC)	90 ~ 264V AC	47 ~ 63Hz	COLD START 45A	< 0.25 mA / 240VAC	Over Voltage	I/P-0/P:3.75K VAC	L-N :2KV	1145.7K HRS Min / 50,000 HRS @ TCASE 55°C	53375 HRS @ 40°C

OPTICS	Optics Type	MOC of Optics	Secondary Optics
	Glass Lens	Borosilicate Glass	Toughned Glass

FIXTURE / HEAT SINK	Make of Fixture	Certification	Heat Sink Make	MOC – Heat Sink	Junction Temperature -T _j	Case Temperature- T _c
	Sudhir	CMRI Certified including LED Lamp	ILS (Own Design)	Aluminum Extrusion - LM 06	64°C	55°C

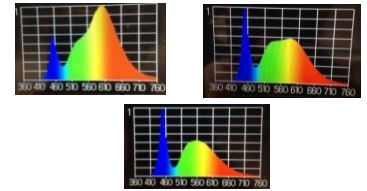
Product Photograph & Thermal Image



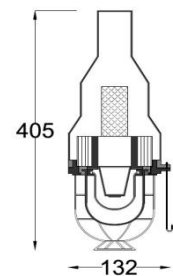
Reference Documents

1. Power Analyser Report With Harmonics
2. Electrical Efficiency Reprout
3. Spectroradiometric Test Report
4. TRT Report
5. LM 79 Report
6. IP 66 Test Report
7. LM 70, LM 80 Report

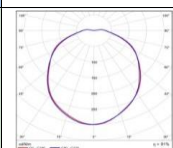
LED Spectrum



Schematic Drawing



Light Distribution Diagram



Actual Test Report

SERIAL NO.	ILS-4020142					
Mfg Date	11-9-2014.2:45:33 PM					
LED SR. No.	F14530518946					
DRIVER SR. NO.	HB42A79140					
Input	V	A	Hz	W	VA	PF
	240.300	0.15	50	15.30	36.516	0.419
Output	DC.V	DC.A	DC.W	EFF	THD	
	37.20	0.33	12.16	79.5	A class	

ILS SPECIALITY : This Fixture is providing required spreaded illumination level without Glare through diffused light. ILS products are having Precise Thermal management for longer life and Precise light spreading angle for required illumination.

Prepared By	Reviewed By	Approved By