



Ideal Lighting Systems Pvt. Ltd.



PRODUCT SPECIFICATIONS

PRODUCT NAME	LED Flame Proof Well Glass	Doc No. - ILS/FP/SPC-07A/00
PRODUCT CODE	FLPWGSM-30-XX-YY	Date : 01.04.2016

Characteristics	Std. Value
Luminaries wattage	30 Watt
Input Voltage	230 V
Input Frequency	50 Hz
Input Current	0.5 A
Power Factor	>0.9
Athd.	CLASS A
Electrical Efficiency	84%
Light Spreading Angle	180°
Temperature Class	T6
IP Standard	IP66
Total Weight	6.27 Kg
Starting Time	Rapid (0.2 Sec)
Glare Standard	G 1
Guarantee	3 Years including FLUX/CCT/CRI

Model No	CLU038 - 1208		
LED type / No of LED Lamp	COB/ Single Lamp		
Total Lumen @Tc 25°C	4194	4398	4226
Lumen Efficacy (Lm/ Watt)	161 lm/W	169 lm/W	162 lm/W
CCT / Color Rendering index	3000K / RA 70	5000K / RA 70	6500K / RA 80
SP Ratio	2-2.25		

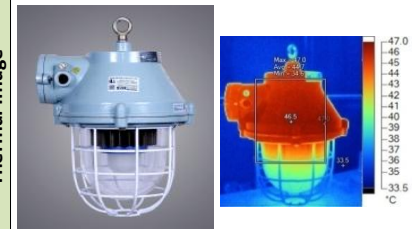
MacAdam Ellipse Stage	STEP 3		
LED -Wattage/Current/Voltage	26 W / 727mA/ 35.8 V @Tc 25°C		
Lamp Life	1,00,000 Hours Min.		
Certifications / Reports	LM70, LM80/Photo Bio. Test / Vibration Test		
Identification Feature	Unique Serial No. Printed on each Lamp		
Actual Test Report of CITIZEN LED Lamp	Actual Operating test Report for 63,000Hrs		

Model No	APC-35-700		
Type of Driver	Constant Current (CC)		
Input Voltage Range	90VAC ~ 264 VAC		
Frequency Range	47 ~ 63Hz		
Inrush current	COLD START 45A		
Leakage current	< 0.25 mA / 240VAC		
Output Protection	Over Voltage		
Withstand Voltage	I/P-O/P:3.75K VAC Min.		
Surge Protection	L-N :2KV		
MTBF /DMTBF	518.9K HRS Min / 50,000 HRS @ TCASE 65°C		
Capacitor Life Cycle	57288 HRS @ 40°C		

Optics Type	Glass Diffuser		
MOC of Optics	Borosilicate Diffused Glass		
Secondary Optics	Toughned Glass		

Make of Fixture	Sudhir		
Certification	CMRI Certified including LED Lamp		
Heat Sink Make	ILS (Own Design)		
MOC – Heat Sink	Aluminum Extrusion - LM 06		
Junction Temperature -T _j	73°C		
Case Temperature- T _c	60°C		

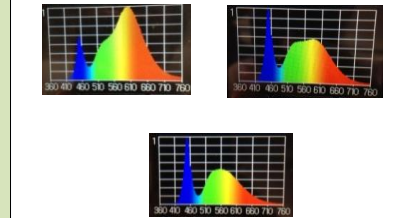
Product Photograph & Thermal Image



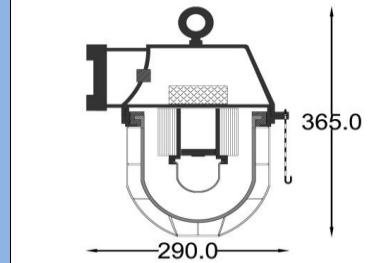
Reference Documents

1. Power Analyser Report With Harmonics
2. Electrical Efficiency Reprout
3. Spectroradiometric Test Report
4. TRT Report
5. LM 79 Report
6. IP 66 Test Report
7. LM 70, LM 80 Report

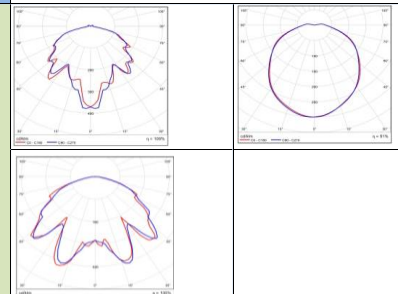
LED Spectrum



Schematic Drawing



Light Distribution Diagram



Actual Test Report

SERIAL NO.	ILS-4020145					
Mfg Date	11-01-2016.1:48:25 PM					
LED SR. No.	F14530518913					
DRIVER SR. NO.	HB42A79112					
Input	V	A	HZ	W	VA	PF
	241.87	0.286	50	31.13	69.17	0.45
Output	DC.V	DC.A	DC.W	EFF	THD	
	36.88	0.706	26.05	83.68	A class	

ILS SPECIALITY : This Fixture is providing required spreaded illumination level without Glare through diffused light. ILS products are having Precise Thermal management for longer life and Precise light spreading angle for required illumination.

Prepared By	Reviewed By	Approved By