



ideal Lighting Systems Pvt. Ltd.



PRODUCT SPECIFICATIONS

PRODUCT NAME	LED Weather Proof Bay Light - Gem	Doc No. - ILS/WP/SPC-105/0
PRODUCT CODE	WPHBCHB-160-XX-YY	Date : 01.04.2016

Characteristics

Characteristics	Std. Value
Luminaries wattage	150 Watt
Input Voltage	230 V
Input Frequency	50 Hz
Input Current	0.78 A
Power Factor	> 0.95
Athd.	CLASS C
Efficiency	93%
Light Spreading Angle	60° / 90° / 120°
Temperature Class	T6
IP Standard	IP65
Total Weight	5.8 Kg
Starting Time	Rapid (0.2 Sec)
Guarantee	5 Years including FLUX/CCT/CRI

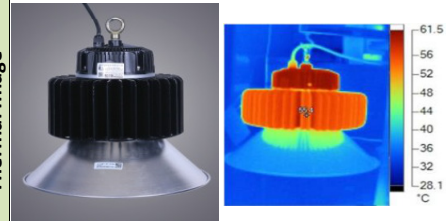
Model No	CLU048 - 1818		
LED type / No of LED Lamp	COB/ Single Lamp		
Total Lumen @Tc 25°C	20868	21882	21028
Lumen Efficacy (Lm/ Watt)	143 lm/W	150 lm/W	144 lm/W
CCT / Color Rendering index	3000K / RA 70	5000K / RA 70	6500K / RA 80
SP Ratio	2-2.25		
MacAdam Ellipse Stage	STEP 3		
LED -Wattage/Current/Voltage	146W / 2590 mA/ 56.4 V @Tc 25°C		
Lamp Life	1,00,000 Hours Min.		
Certifications / Reports	LM70, LM80/Photo Bio. Test / Vibration Test		
Identification Feature	Unique Serial No. Printed on each Lamp		
Actual Test Report of CITIZEN LED Lamp	Actual Operating test Report for 63,000Hrs		

Model No	HBG-160-60		
Type of Driver	Constant Current (CC)		
Input Voltage Range	90VAC ~ 305 VAC		
Frequency Range	47 ~ 63Hz		
Inrush current	COLD START 65A		
Leakage current	< 0.75 mA / 240VAC		
Output Protection	Short Circuit, Over Voltage, Over Current, Over Temperature.		
Withstand Voltage	I/P-O/P:3.75K VAC Min.		
Surge Protection	L-N :4KV		
MTBF /DMTBF	252.3 KHRS Min / 40,000 HRS @ TCASE 70°C		
Capacitor Life Cycle	59778 HRS @ 60°C		

Optics Type	Glass Lens / Diffuser	
MOC of Optics	Borosilicate Glass	

Make of Fixture	ILS Pvt.Ltd.	
Heat Sink Make	ILS (Own Design)	
MOC – Heat Sink	Aluminum Casting - LM 06	
Junction Temperature -T _j	89°C	
Case Temperature- T _c	65°C	

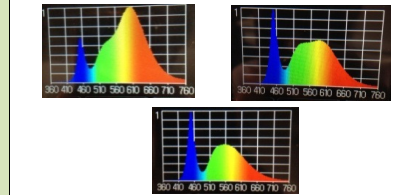
Product Photograph & Thermal Image



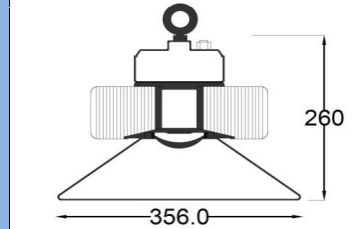
Reference Documents

1. Power Analyser Report With Harmonics
2. Electrical Efficiency Replot
3. Spectroradiometric Test Report
4. TRT Report
5. LM 79 Report
6. IP 65 Test Report
7. LM 70, LM 80 Report

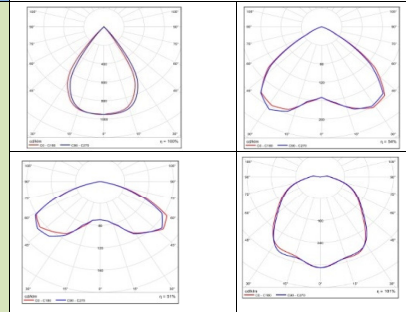
LED Spectrum



Schematic Drawing



Light Distribution Diagram



Actual Test result

SERIAL NO.	ILS-60202581					
Mfg Date	16-01-2016:3:19:06 PM					
LED SR. No.	F14530518898					
DRIVER SR. NO.	HB42A79135					
Input	V	A	Hz	W	VA	PF
	241.02	0.689	50	161.08	166.06	0.97
Output	DC.V	DC.A	DC.W	EFF	THD	
	56.80	2.589	147.05	91.29	C-class	

ILS SPECIALITY : This Fixture is having Lowest Thermal Resistance and single optics. ILS products are having Precise Thermal Management for longer life and Precise light spreading angle for required illumination.

Prepared By	Reviewed By	Approved By