



ideal Lighting Systems Pvt. Ltd.



PRODUCT SPECIFICATIONS

PRODUCT NAME	LED Weather Proof Well Glass	Doc No. - ILS/WP/SPC-64/00
PRODUCT CODE	WPWGHBG-60-XX-YY	Date : 01.04.2016

Characteristics	Std. Value
Luminaries wattage	60 Watt
Input Voltage	230 V
Input Frequency	50 Hz
Input Current	0.4 A
Power Factor	>0.95
Athd.	CLASS C
Efficiency	90%
Light Spreading Angle	180°
Temperature Class	T6
IP Standard	IP65
Total Weight	4.32 Kg
Starting Time	Rapid (0.2 Sec)
Guarantee	5 Years including FLUX/CCT/CRI

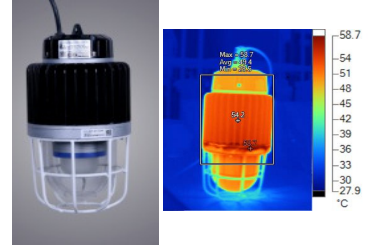
Model No	CLU048 - 1812		
LED type / No of LED Lamp	COB/ Single Lamp		
Total Lumen @Tc 25°C	8874	9303	8939
Lumen Efficacy (Lm/ Watt)	164 lm/W	172 lm/W	165 lm/W
CCT / Color Rendering index	3000K / RA 70	5000K / RA 70	6500K / RA 80
SP Ratio	2-2.25		
MacAdam Ellipse Stage	STEP 3		
LED -Wattage/Current/Voltage	54W / 1013mA/ 53.3 V @Tc 25°C		
Lamp Life	1,00,000 Hours Min.		
Certifications / Reports	LM70, LM80/Photo Bio. Test / Vibration Test		
Identification Feature	Unique Serial No. Printed on each Lamp		
Actual Test Report of CITIZEN LED Lamp	Actual Operating test Report for 63,000Hrs		

Model No	HBG-60-1400		
Type of Driver	Constant Current (CC)		
Input Voltage Range	90VAC ~ 295 VAC		
Frequency Range	47 ~ 63Hz		
Inrush current	COLD START 45A		
Leakage current	< 0.75 mA / 240VAC		
Output Protection	Short Circuit, Over Temperature		
Withstand Voltage	I/P-0/P:3.75K VAC Min.		
Surge Protection	L-N :2KV		
MTBF /DMTBF	452K HRS Min / 50,000 HRS @ TCASE 75°C		
Capacitor Life Cycle	67540 HRS @ 40°C		

Optics Type	Glass Diffuser / Transparent		
MOC of Optics	Borosilicate Glass		
Secondary Optics	Toughned Glass		

Make of Fixture	ILS Pvt. Ltd.		
Heat Sink Make	ILS (Own Design)		
MOC – Heat Sink	Aluminum Extrusion - LM 06		
Junction Temperature -T _j	68°C		
Case Temperature- T _c	55°C		

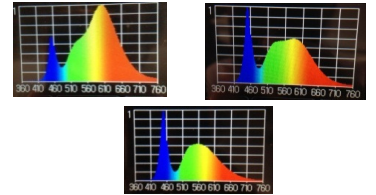
Product Photograph & Thermal Image



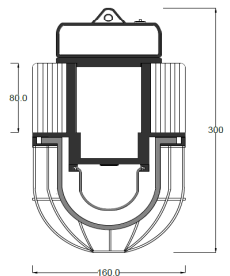
Reference Documents

1. Power Analyser Report With Harmonics
2. Electrical Efficiency Replot
3. Spectroradiometric Test Report
4. TRT Report
5. LM 79 Report
6. IP 65 Test Report
7. LM 70, LM 80 Report

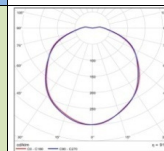
LED Spectrum



Schematic Drawing



Light Distribution Diagram



Actual Test Report

SERIAL NO.	ILS-4020149					
Mfg Date	11-01-2016.10:48:48 PM					
LED SR. No.	F14530518925					
DRIVER SR. NO.	HB42A79189					
Input	V	A	HZ	W	VA	PF
	239.45	0.278	50	61.91	66.57	0.93
Output	DC.V	DC.A	DC.W	EFF	THD	
	53.87	1.004	54.09	87.37	C class	

ILS SPECIALITY : This Fixture is providing required spreaded illumination level without Glare through diffused light. ILS products are having Precise Thermal management for longer life and Precise light spreading angle for required illumination.

Prepared By	Reviewed By	Approved By